



# BUCKINGHAM COUNTY LANDFILL SUPERFUND SITE

DILLWYN, BUCKINGHAM COUNTY, VIRGINIA

FEBRUARY 2013

*EPA is cleaning up the Buckingham County Landfill Site using sound science and with the health and safety of the community as a priority. We are committed to providing the community with accurate information and opportunities to be involved throughout the cleanup process. For more information, please visit our website often at: <http://www.epa.gov/reg3hwmd/npl/VAD089027973.htm>*

## EPA CONDUCTING FIVE YEAR REVIEW AT THE SITE

The EPA is conducting the third Five-Year Review of the remedy implemented at the Buckingham County Landfill Site near Sprouse's Corner. As required by law, EPA re-evaluates Superfund sites every five years to ensure that the cleanups conducted remain fully protective of human health and the environment.

The Five Year Review includes inspecting the site and evaluating the progress of the cleanup. EPA will also review data and other records and, determine if any new regulatory requirements have been established since EPA's original cleanup decision was finalized.

During EPA's 2008 review of the site, we determined that the remedy was not functioning as intended. As a result, further study was recommended. EPA will evaluate this information as part of the current Five Year Review.

## GET INVOLVED! PARTICIPATE IN THE FIVE YEAR REVIEW

Part of our five year review process includes an opportunity for the community to voice any concerns they may have related to the site or our cleanup process. Comments from the community will be considered and summarized in the Five Year Review Report. If you are interested in being interviewed as part of this process, please contact your Community Involvement Coordinator at:

**Vance Evans**

**EPA Community Involvement Coordinator**

**U. S. EPA Region 3**

**1650 Arch Street (3HS52)**

**Philadelphia, PA 19103-2029**

**(215) 814-5526**

**[evans.vance@epa.gov](mailto:evans.vance@epa.gov)**



## FOCUSED FEASIBILITY STUDY UPDATE

EPA is nearing completion of the Focused Feasibility Study (FFS) for the Buckingham County Landfill Site. The FFS looks at more than 10 years of remedial investigation, source removal, and an interim remedial action with the goal of selecting the best possible cleanup option. We expect to have the FFS completed by 2014.

Field work for the FFS began in the summer of 2012 and includes:

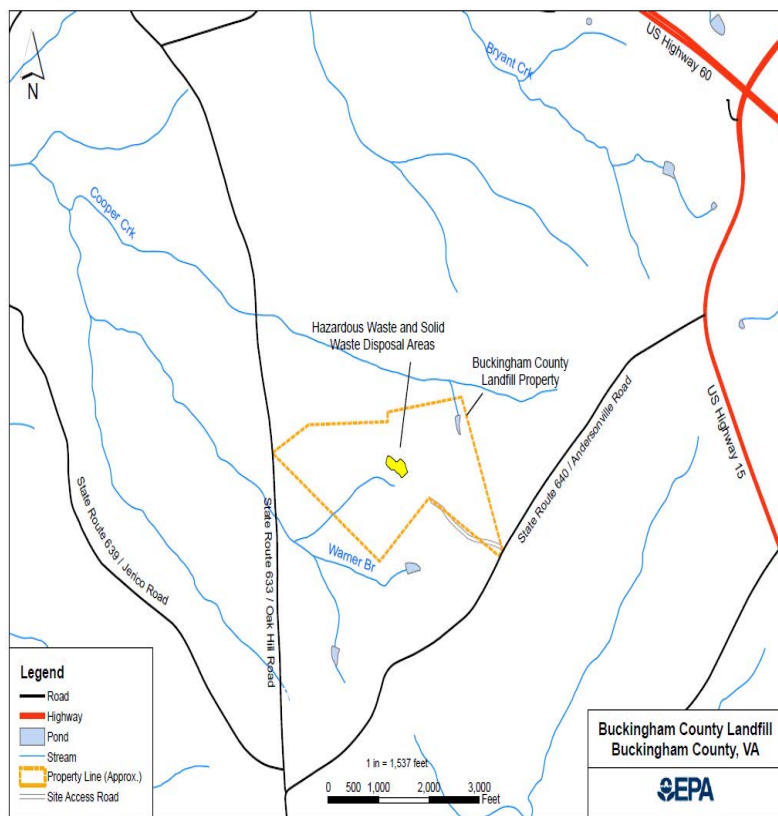
- Installing additional monitoring wells to better delineate the groundwater plume.
- Performing a field treatability study in the landfill area of the site that includes injecting treatment chemicals into the subsurface to break down the contaminants present in the groundwater.

## SITE HISTORY: A SNAPSHOT

- The Buckingham County Landfill Superfund site consists of a two-acre hazardous waste disposal area.
- Several companies, including Thomasville Furniture Industries, Inc., used the site to dispose of various wastes between 1962 and 1983.
- As a result of these disposal activities, the groundwater is contaminated with various volatile organic compounds (VOCs) such as trichloroethylene (TCE) and semi-volatile compounds such as 1, 4-dioxane.
- In 1983, all disposal operations ceased when the hazardous waste portion of the site was closed.
- In 1985, the site was proposed to EPA's National Priorities List (NPL), making it eligible for federal cleanup, and it was finalized on the NPL in October, 1989.
- EPA completed a Remedial Investigation and Feasibility Study (RI/FS) of the site in 1993 to determine the source and extent of contamination and to evaluate cleanup options.
- A final cleanup option, preferred by the community, was selected in the 1994 Record of Decision.
- In 1998, EPA began monitoring the groundwater on a quarterly basis and the monitoring program is ongoing.
- A 2008 EPA review of the site confirmed that while residential wells were *not* impacted by the site and are a safe source of drinking water, the cleanup was not functioning as designed and site-related contaminants were detected in the groundwater beyond the site boundary.
- Based on these findings, EPA decided that more sampling and analysis was needed to ensure the long term protectiveness of human health and the environment, thus the need to conduct the FFS mentioned above.

***For more information about EPA's Superfund Program, please visit us at:***

**<http://www.epa.gov/superfund/>**



## EPA'S SUPERFUND COMMUNITY INVOLVEMENT PROGRAM

EPA is committed to involving the community in the Superfund cleanup process. If you have any questions about our work or would like to participate in the interview process for the five-year review, please contact your Community Involvement Coordinator for the site, Vance Evans.

*For more information about Superfund and our Community Involvement Program, please visit us at:*

*<http://www.epa.gov/superfund/community/index.htm>*

*<http://www.epa.gov/superfund/about.htm>*

## FOR MORE INFORMATION

### Contact EPA

**Vance Evans**

**Community Involvement Coordinator  
U. S. EPA Region 3**

**1650 Arch Street (3HS52)**

**Philadelphia, PA 19103-2029**

**(215) 814-5526**

**[evans.vance@epa.gov](mailto:evans.vance@epa.gov)**

**Christian Matta**

**Remedial Project Manager**

**U. S. EPA Region 3**

**1650 Arch Street (3HS23)**

**Philadelphia, PA 19103-2029**

**(215) 814-2317**

**[matta.christian@epa.gov](mailto:matta.christian@epa.gov)**

### Go To The Buckingham County Landfill Website:

[http://www.epa.gov/reg3hwmnd/npl/  
VAD089027973.htm](http://www.epa.gov/reg3hwmnd/npl/VAD089027973.htm)



U.S. Environmental Protection Agency  
Attn: Vance Evans  
Mailcode 3H552  
1650 Arch Street  
Philadelphia, PA 19103

