



BoRit SUPERFUND SITE COMMUNITY UPDATE

AMBLER, WHITPAIN, UPPER DUBLIN, PENNSYLVANIA

MAY 2011

EPA is cleaning up the BoRit Site using sound science and with the health and safety of the community as a priority. We are committed to providing the community with accurate information and opportunities to be involved throughout the cleanup process.

Regular updates will be sent to the community about our activities. For more information, please visit our website often at: <http://www.epa.gov/reg3hwmd/npl/PAD981034887.htm>

**THE EPA FIELD HOUSE WILL CLOSE THE
WEEK OF MAY 23**
**THE NEIGHBORHOOD IS INVITED TO A FAREWELL OPEN HOUSE
ON SATURDAY, MAY 21, 2011
10:00 AM TO 1:00 PM**

EPA has been in the neighborhood at our field house on 324 Maple Street since July 2008. We will be moving out of the field house and transferring our field operations to a new on-site command post location during the week of May 23. We continue to be available to the public for questions or concerns. If you wish to visit the command post, please schedule an appointment by calling 215-654-5190, so that we may provide access assistance to you for your visit.

We would like to cordially invite you to an open house this Saturday to thank the neighborhood for welcoming us these past three years. Please stop by to speak with EPA staff about the work we are doing to clean up the BoRit Site. For more information, contact the BoRit Community Involvement Coordinators:

Vance Evans

Trish Taylor

215-814-5526

215-814-5539

or 1-800-553-2509

evans.vance@epa.gov taylor.trish@epa.gov

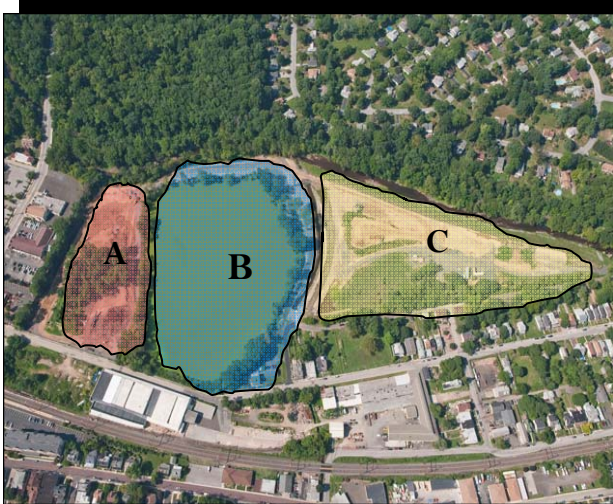


DID YOU KNOW?

To date, we have completed the following activities at the Borit Site:

- Removed asbestos containing material (ACM) and stabilized the stream banks along the Wissahickon and Rose Valley Creeks.
- Are currently working on stream bank stabilization along the Tannery Run.
- Completed on-site sampling of soil, groundwater and surface water in order to develop a future site cleanup plan.

THE SITE TODAY



- The BoRit Asbestos Site was used to dispose asbestos-containing materials (ACM). The site is divided into three distinct sections of land:

Parcel A: A six acre area, including an asbestos pile.

Parcel B: A 15-acre reservoir owned by the Wissahickon Waterfowl Preserve.

Parcel C: An 11-acre closed park owned by Whitpain Township.

BoRit Site Aerial View August 2010

(Photo courtesy of Mr. Salvatore A. Boccuti)



The Completed Restoration of Rose Valley